

CERTIFICATE OF LOCATION OF GOVERNMENT CORNER

NORTH QUARTER Corner of Section 28, Township 108N, Range 39W

5th Principal Meridian, State of Minnesota, County of MURRAY

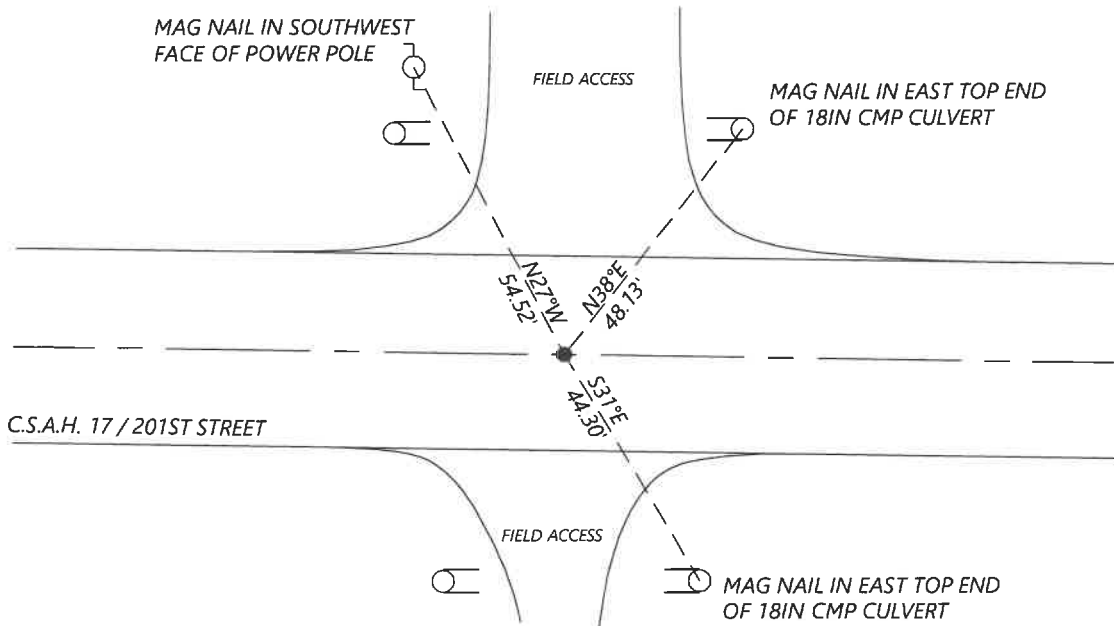
At the corner location shown on the sketch:

On 8/28/2020 found a NO. 5 REBAR WITH CAP "MOBENG LS 11943", DOWN 0.2FT

left monument as found lowered monument removed monument (explain)

On _____ placed a _____

SKETCH OF REFERENCE TIES



N.T.S.

Statement of evidence for this corner location is on back of this page.

I hereby certify that this document was researched and prepared by me or under my direct supervision and that I am a licensed Land Surveyor under the laws of the State of Minnesota.

Signature [Handwritten Signature]

Date 6/17/2021 License No. 45874

Title:

- Land Surveyor
- Professional Engineer
- County Surveyor
- County Engineer

OFFICE OF THE COUNTY RECORDER

County of Murray

I hereby certify that this document was filed in the Co.

Recorder's office at _____ M. on the _____ day of _____ A.D. 20

County Recorder [Handwritten Signature: Karen Brown]
by JUN 22 2021, Deputy

DOCUMENT NO. _____

Statement of Evidence:

North Quarter Corner of Section 28, Township 108 North, Range 39 West, 5th Principal Meridian, Murray County, Minnesota.

1861 July, GLO Notes: Set post in mound.

1976 June, Survey record for Section 28 shows that they excavated a 5x5x5ft hole with a backhoe and found nothing.

2003 April, Road plans for CSAH 17 show the corner assumed at PI statio 26+34.
Coordinates: N: 205745.27 E: 561319.49

2004 August, A survey in Section 21 by Lyle Moseng shows that he set a $\frac{5}{8}$ " rebar with seal #11943 at the corner. He lists coordinates: N: 205745.05 E: 561318.49

2020 September, Westwood Professional Services searched and found a rebar with cap #11943 per 2004 survey. County Coordinates are: N: 205745.03 E: 561318.47. I accepted the found monument and set reference ties.

Analysis of the recovered data, field evidence and survey measurements, indicates that the monument found is the correct perpetuation of this corner. For additional information concerning this corner please contact Westwood Professional Services.